

# emeryville center of community life

**nex-us** [nek-suh s]

1. a means of connection; tie; link.
2. a connected series or group
3. the core or center



nexus partners



*“The Emeryville Center of Community Life is an incredible expression of our linked fate the City, the School District, and community members have come together to talk about and develop an understanding of how we could work together, be in better relationships, and share our facilities. And that's how we developed the idea of this Center of Community Life.”*

Dr. Tony Smith, Former Superintendent







a design exploration





# -PLAN

block  
racist  
teaching



ecct

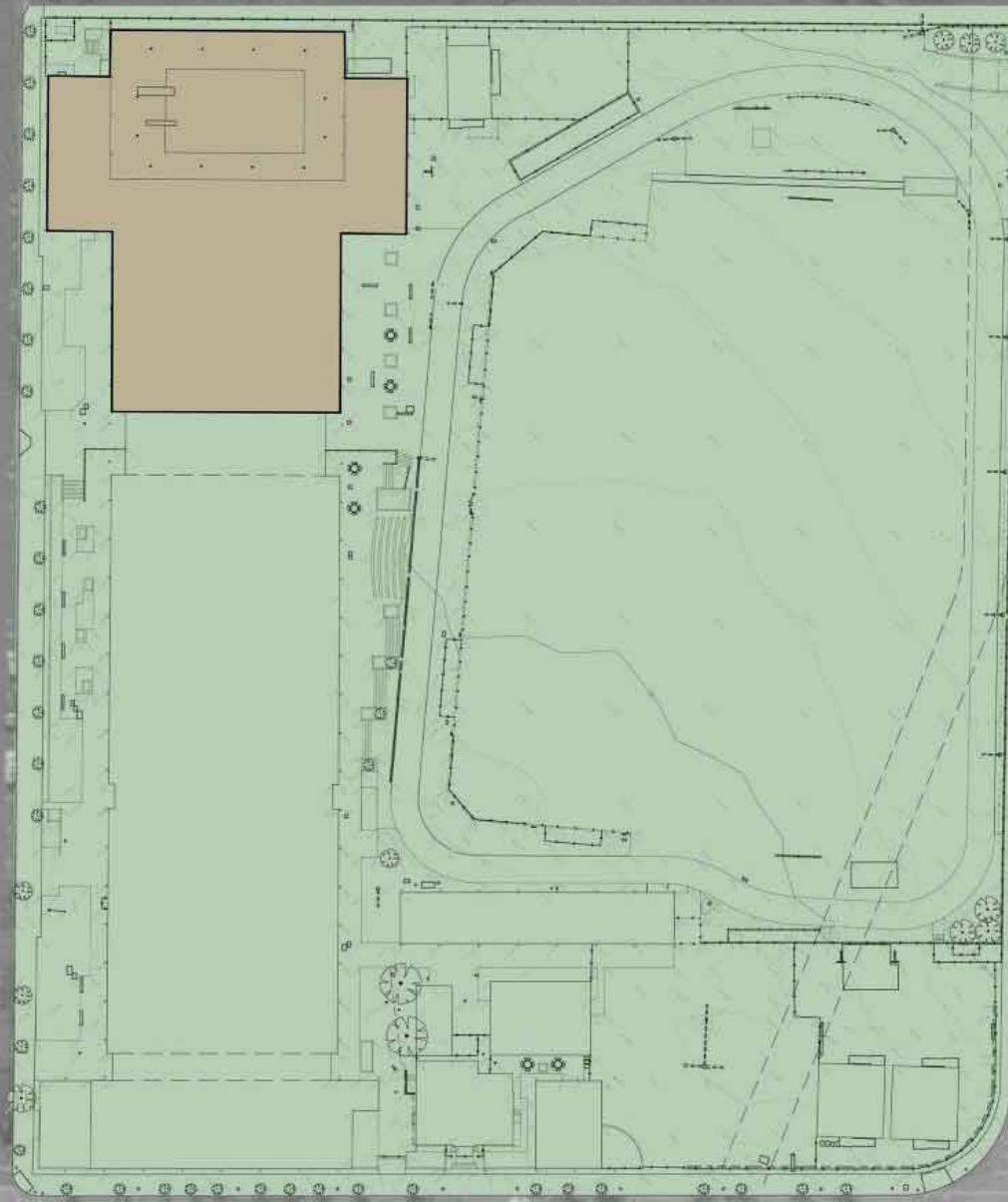
building on work to date

EMERY BAY CONDOS

- sun, wind
- neighbors
- vehicles, cars, bicycles
- water table
- culvert

AC TRANSIT

4TH STREET



53RD STREET

SAN PABLO AVENUE

- senior center
- rec center
- anna yates elementary school
- ralph hawley
- to name a few







ecct

portraits of the community

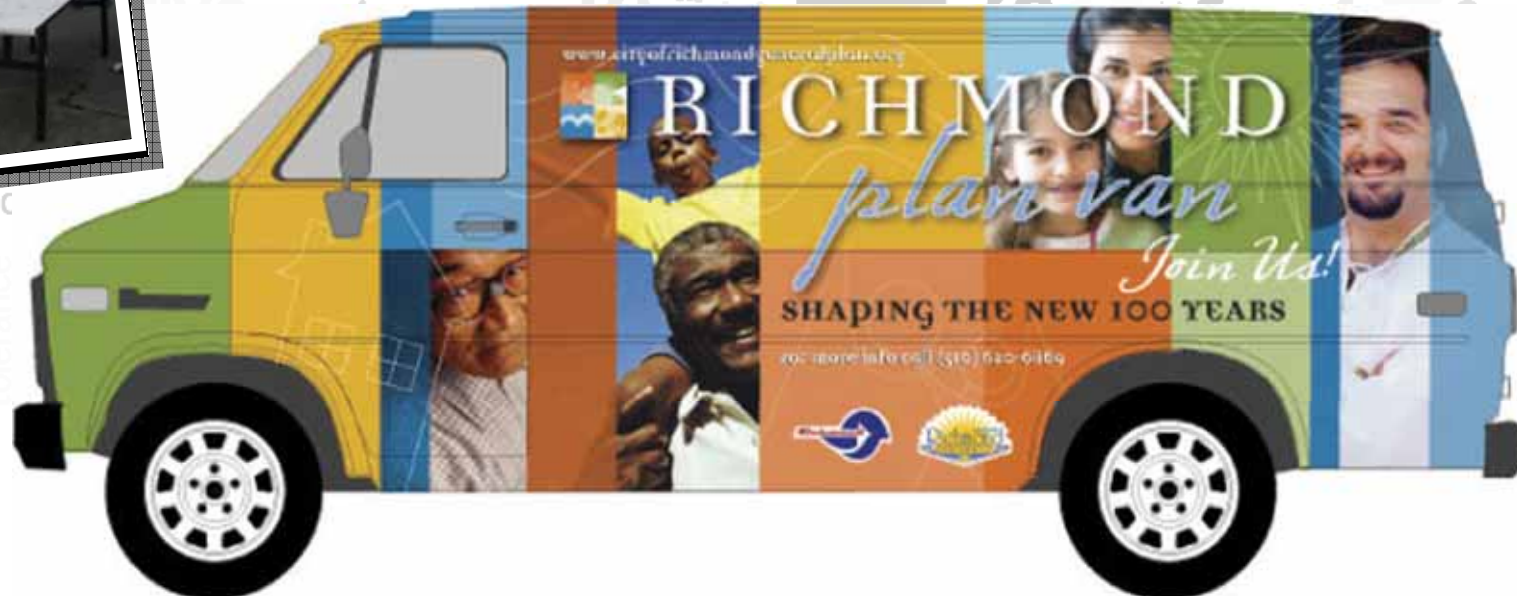
community



community design  
center

community fellows

plan van



ecct

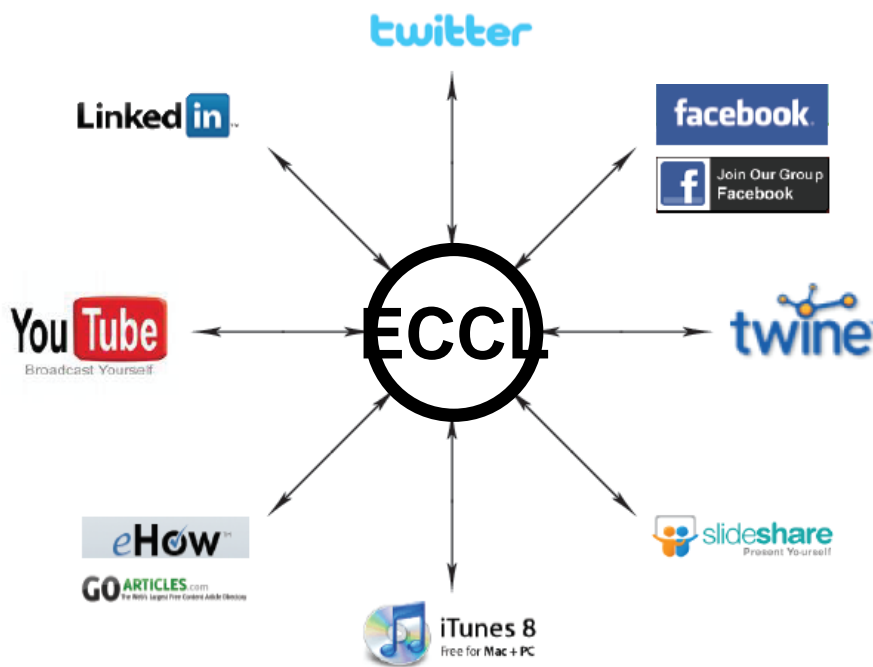
engagement is design

“I like the idea of intergenerational instruction and having all of the resources on site to provide teachers and the community a place that is welcoming / inviting. It will be a magnet to people everywhere.”

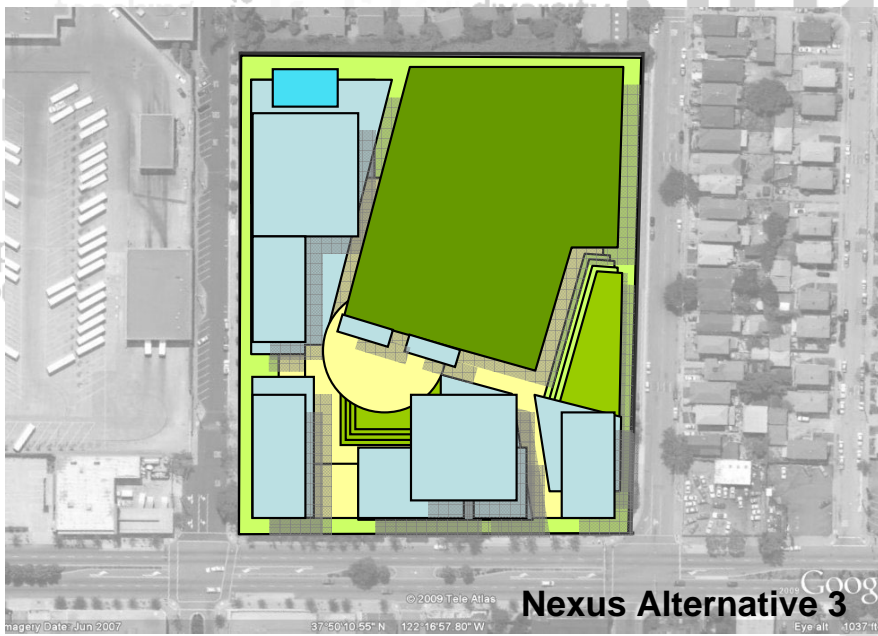
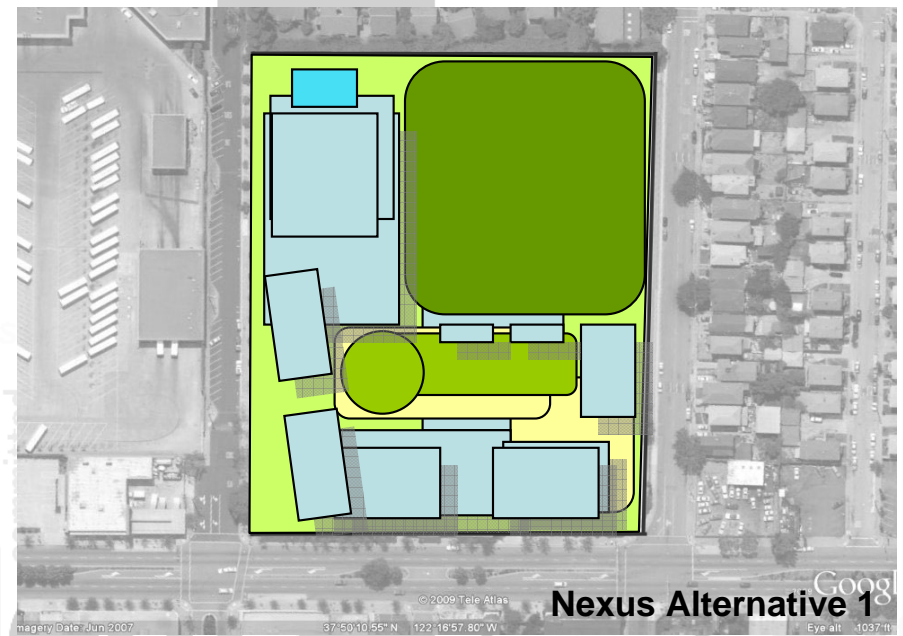
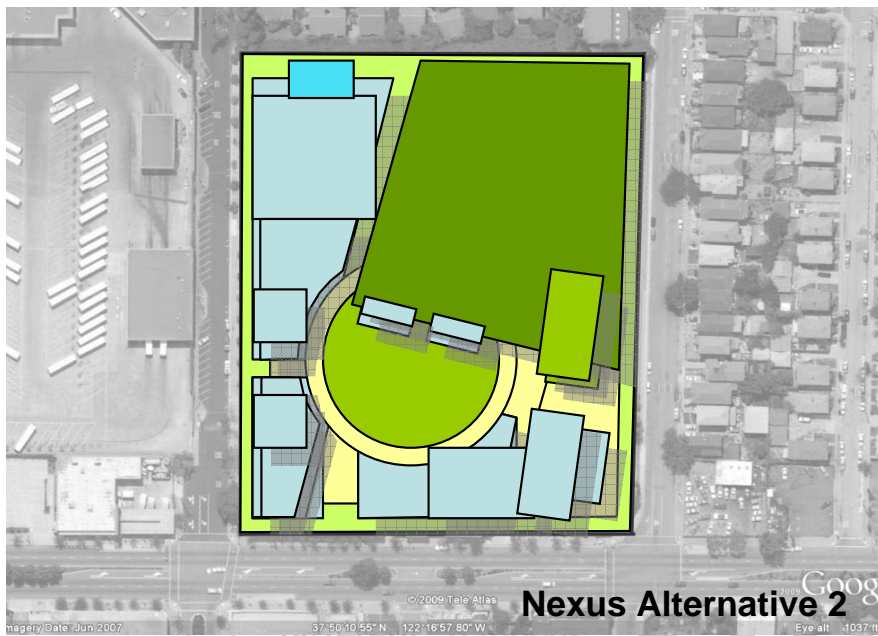
“Will there be teacher’s daycare available?”

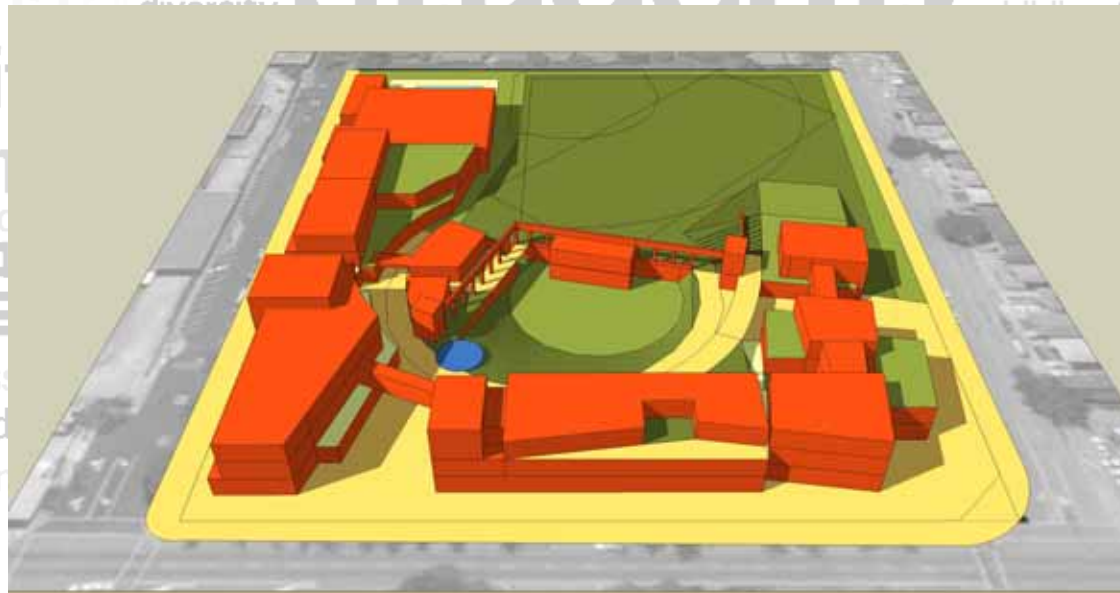
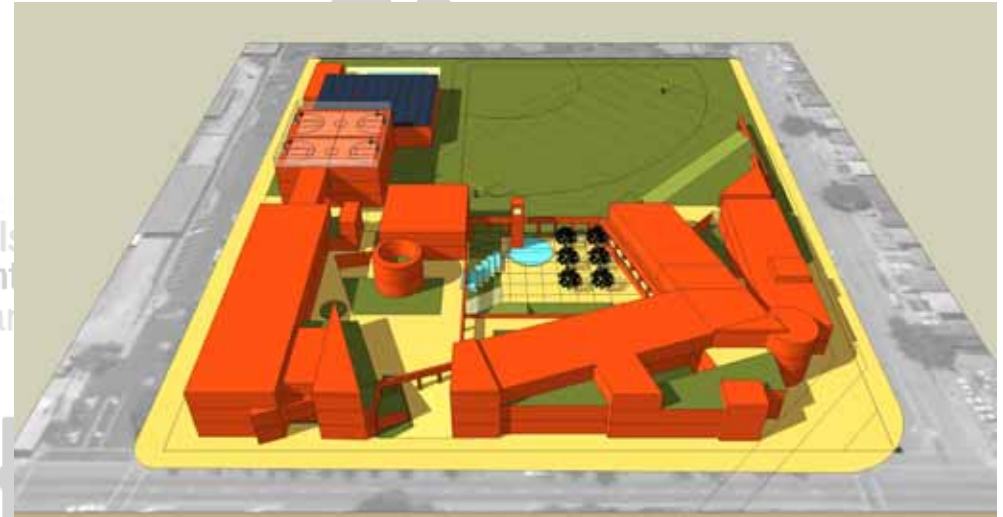
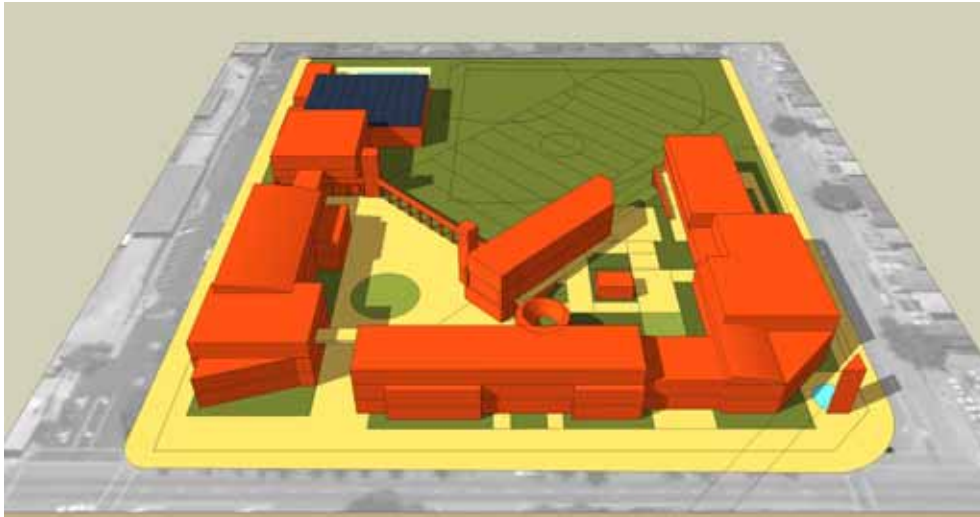
“How can we get the community involved? Many people I know didn’t know about this workshop?”

“I want to know more about sharing space? My concern is I might be working after school and someone else would kick me out for another program.”

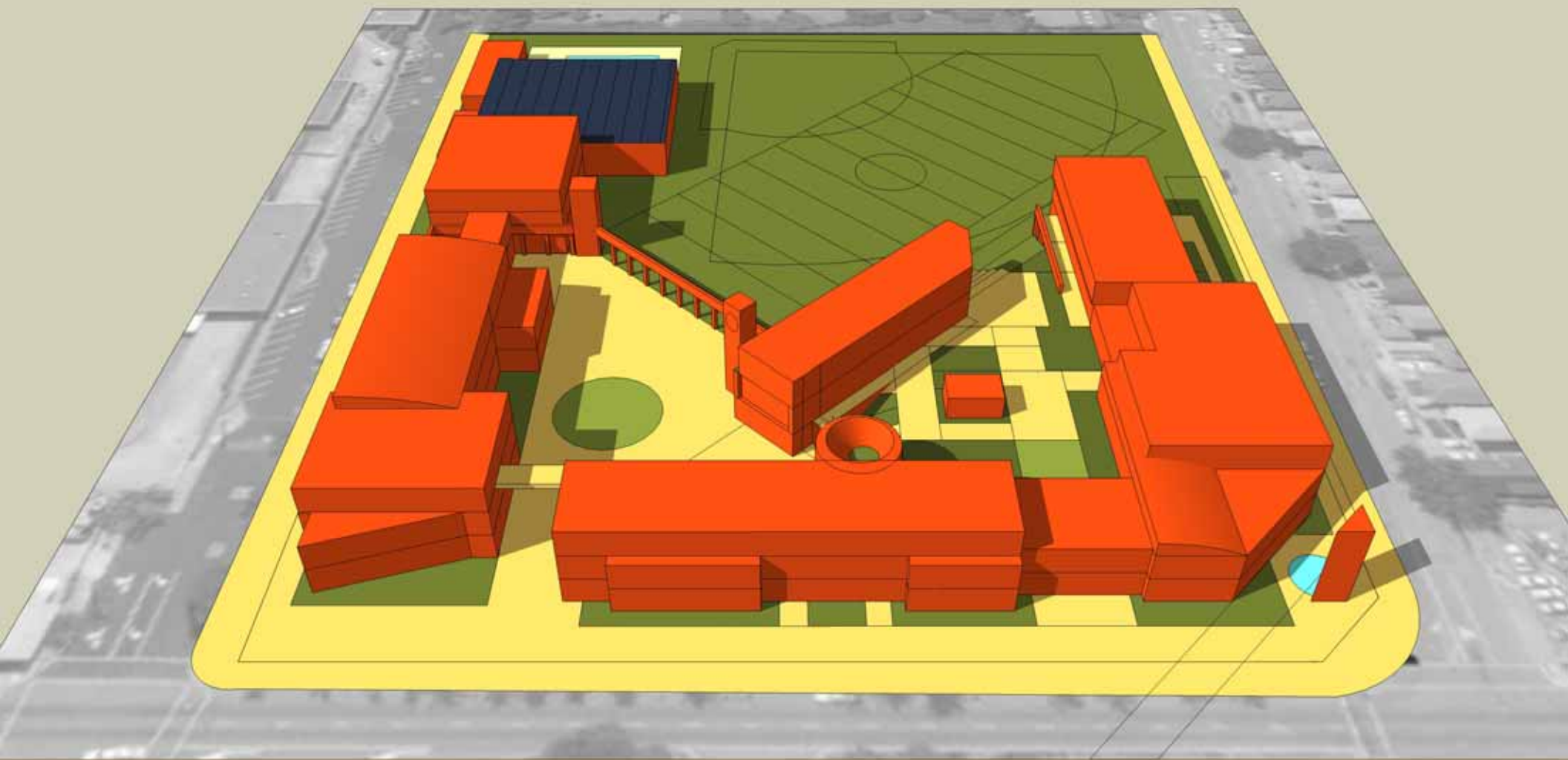






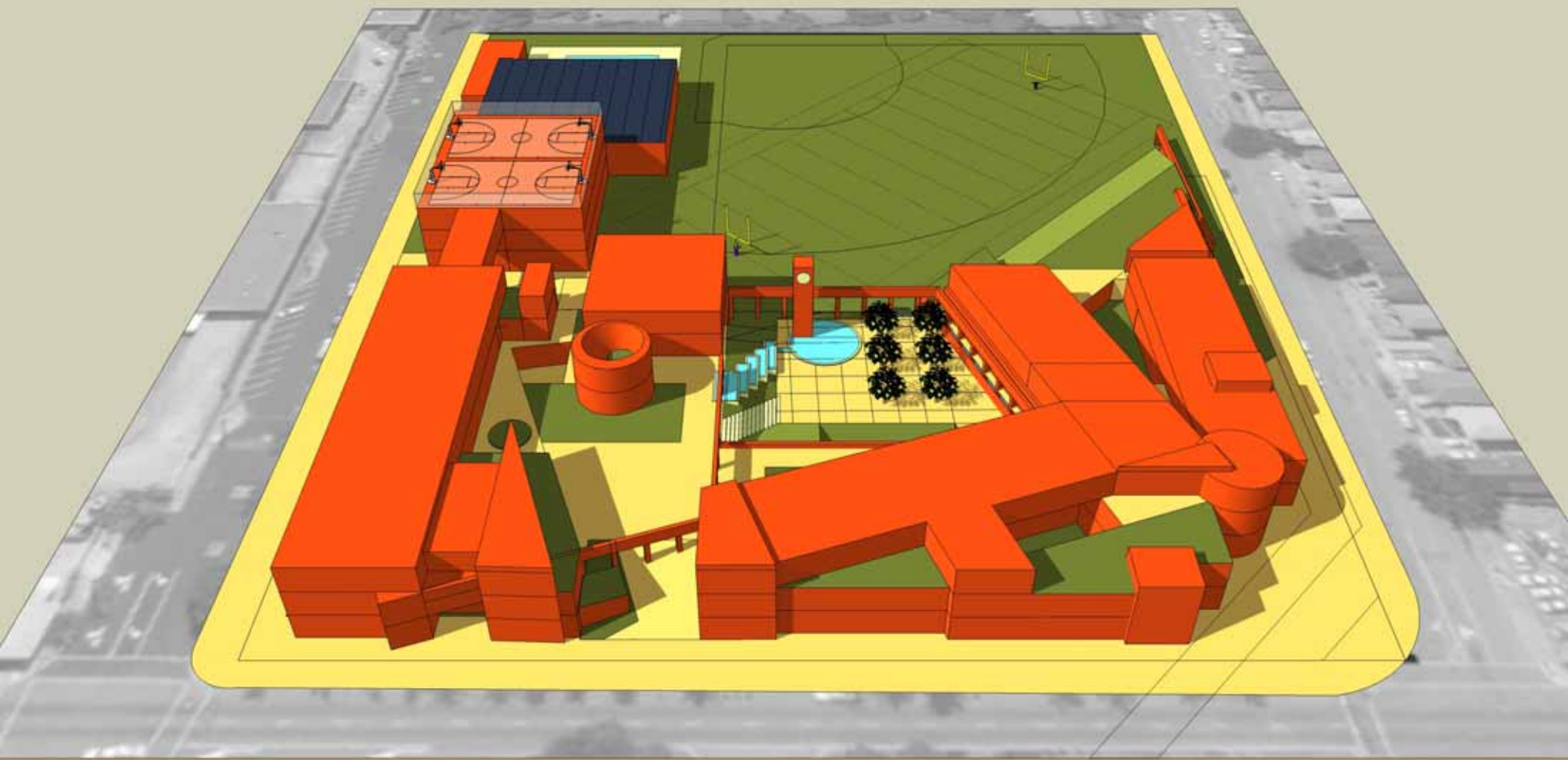






## Highlights:

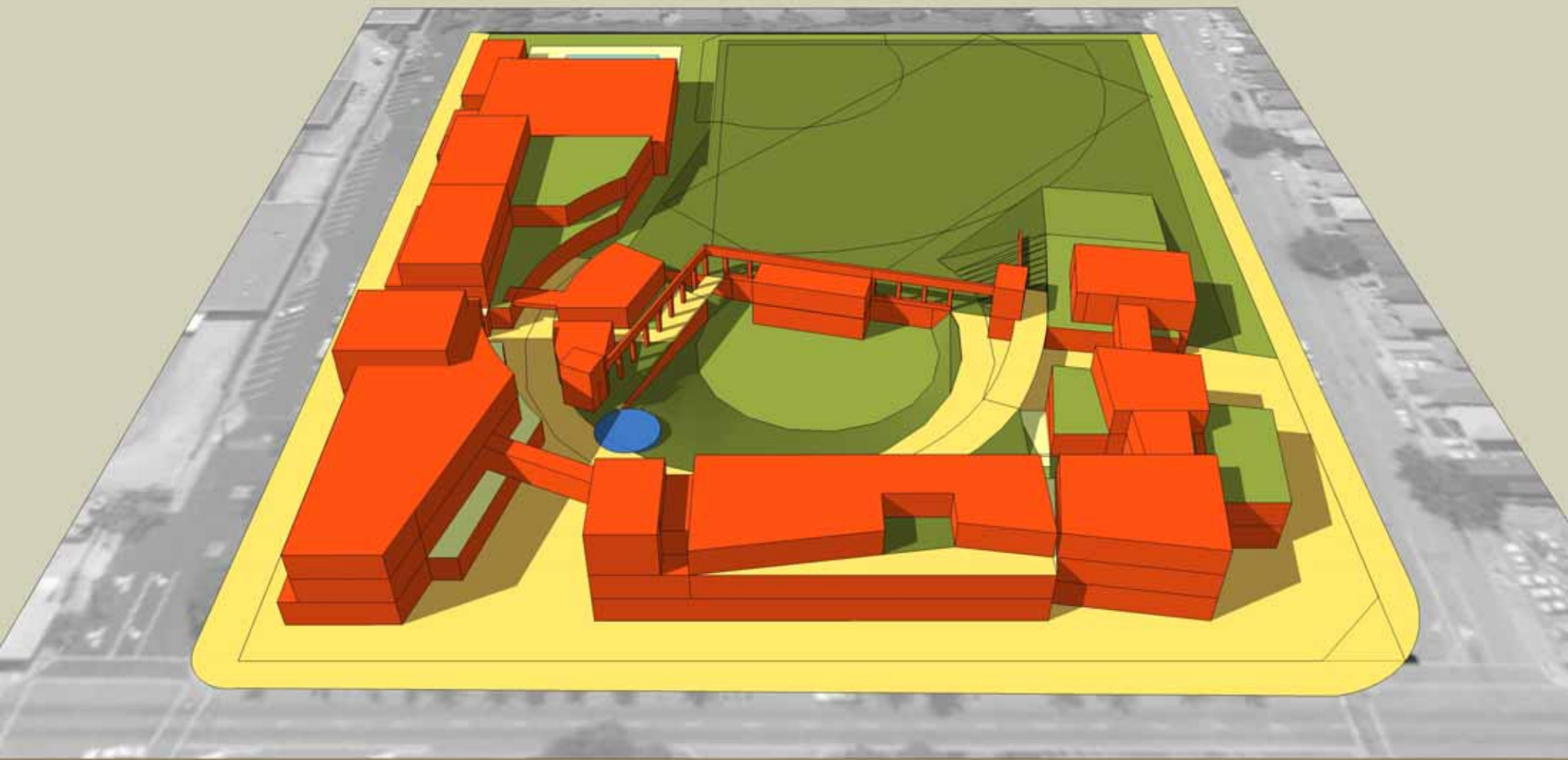
- Community Plaza (left), Student Plaza (right) with programs below
- Strong street edge
- Narrow buildings promote daylight penetration



## Highlights:

- Community Plaza (left), Student Plaza (right) with programs below
- Shared central library / banquet hall
- Accommodates culvert





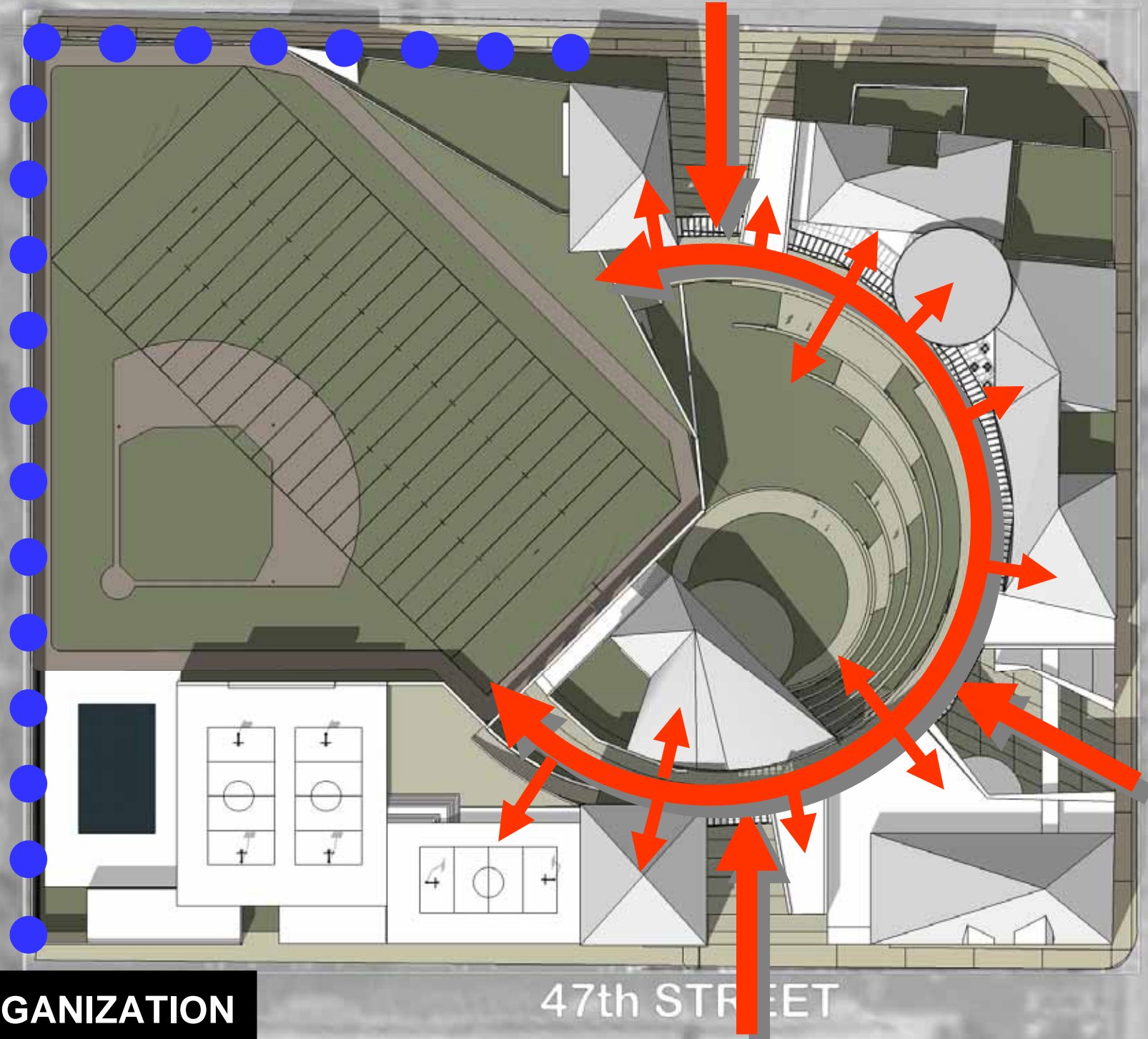
## Highlights:

- Large, central community commons / park
- Security provided by grade separation – students at levels 2 & 3
- Program below sports fields

53rd STREET

SAN PABLO AVE.

47th STREET



**SITE ORGANIZATION**



53rd STREET

UNEXCAVATED

COMMUNITY  
COMMONS

PAVILION

LOADING

KITCHEN /  
STORAGE

PARKING – 80 CARS

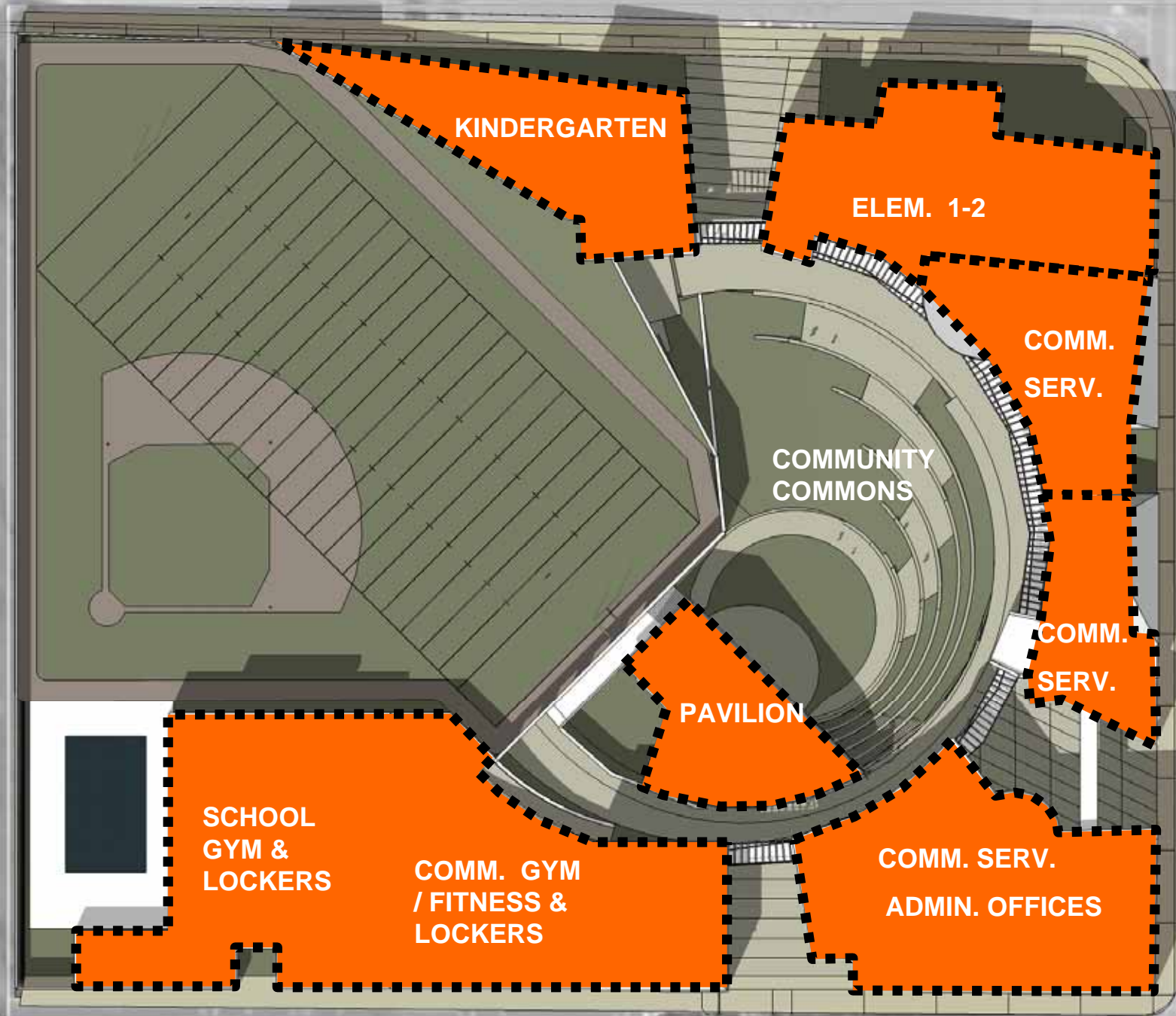
SAN PABLO AVE.

47th STREET



LOWER GARDEN LEVEL

53rd STREET



SAN PABLO AVE.

47th STREET

STREET LEVEL





53rd STREET

ELEM.  
PLAY-  
GROUND

ELEM  
3- 6  
M.U.

ELEM 3- 4

LIBRARY

ELEM 5- 6

COMMUNITY  
COMMONS

H.S. 7-8

H.S.  
M.U.

PROF. DEV.  
TECH LAB.

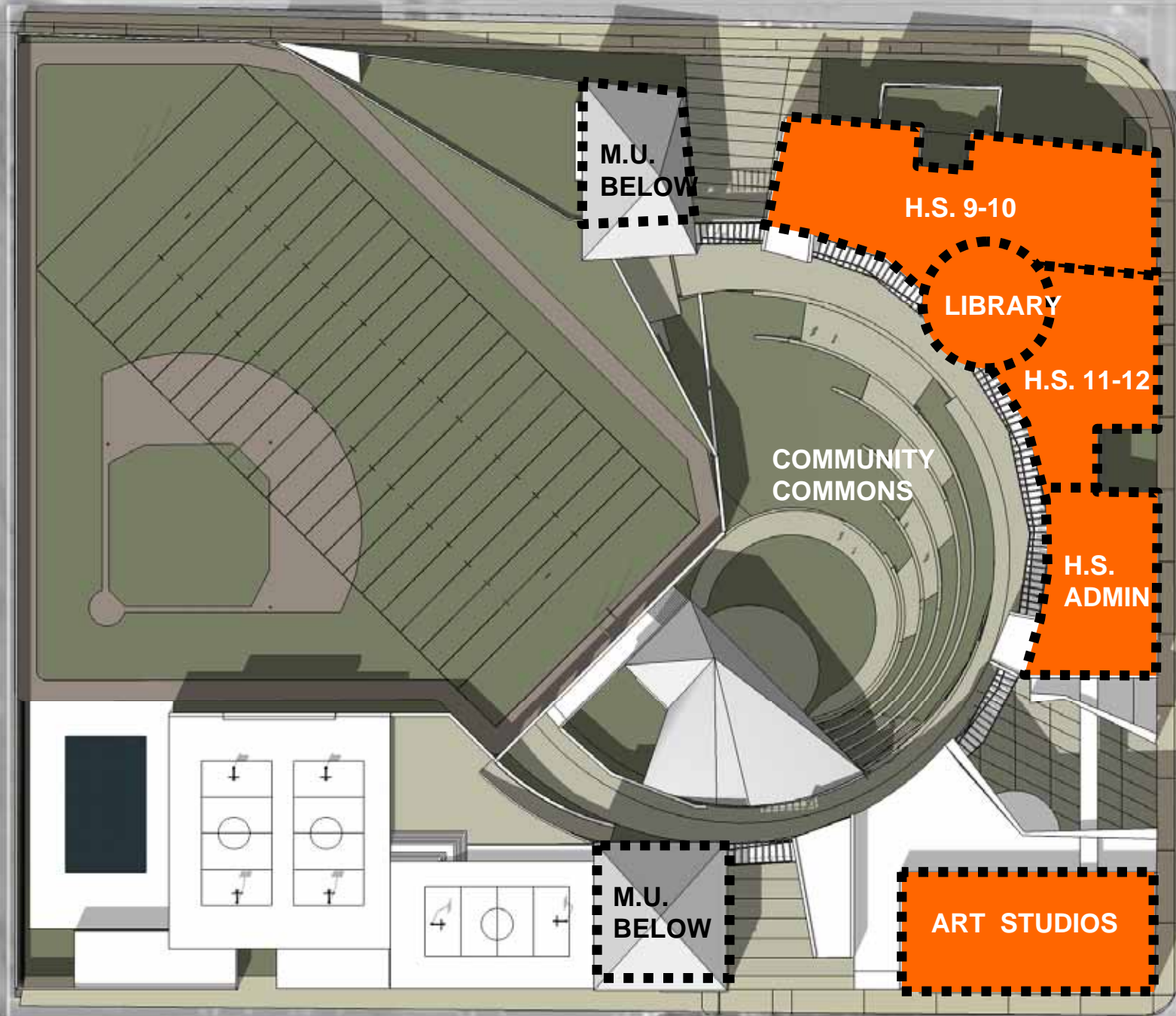
SAN PABLO AVE.

TERRACE LEVEL

47th STREET



53rd STREET



SAN PABLO AVE.

47th STREET

UPPER LEVEL







ecct

community commons





ecct

community commons





ecct

community commons



ccct

community commons







ccct

community commons





community commons









ecct

community commons







ecct

community commons





ecct

community commons









ecct

community commons



















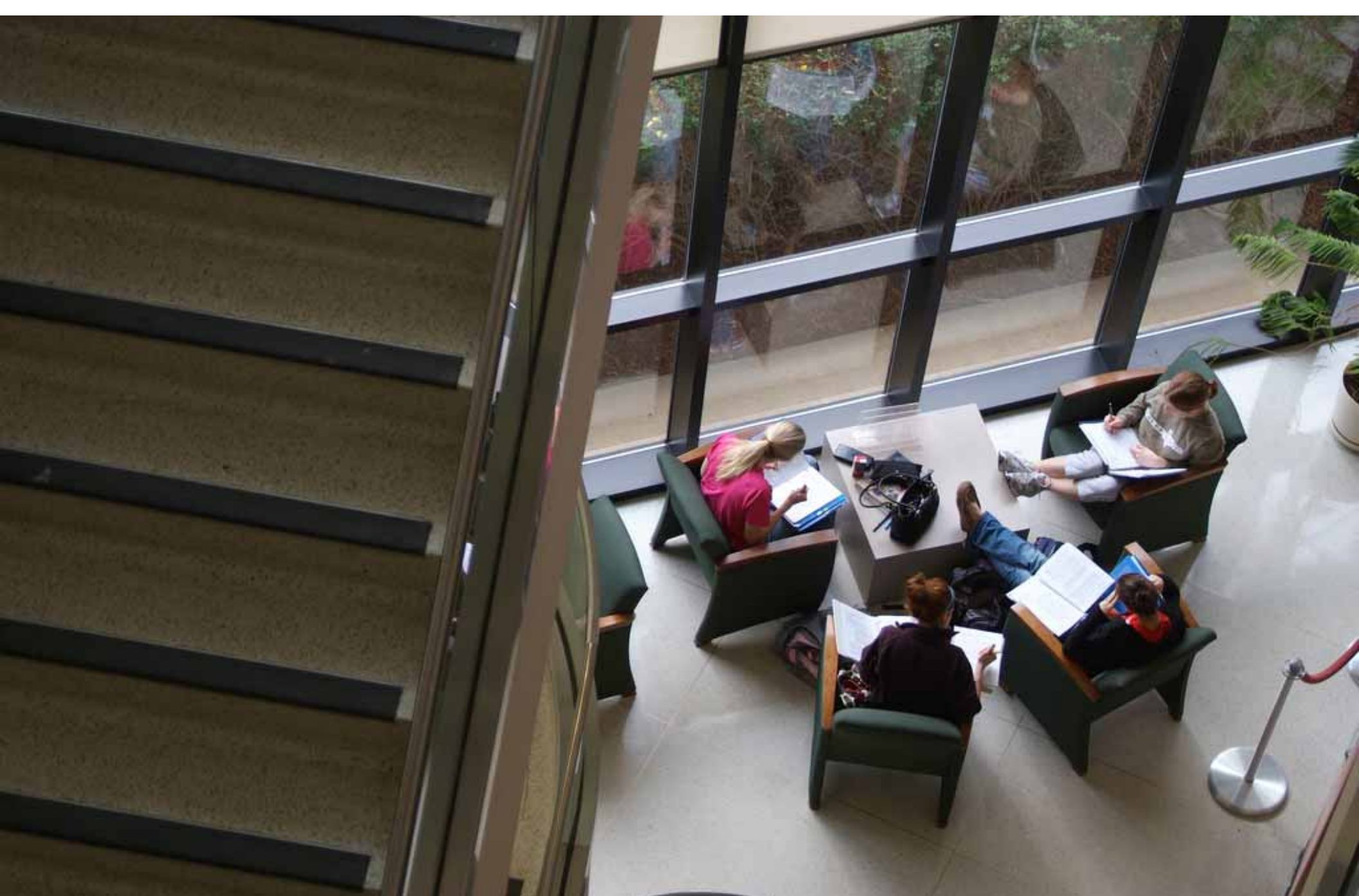






ecet

learning environments







































































ecct

8pm after school activities





ecct

8pm after school activities





